

## Basic Granny Square Pattern

### Difficulty Level

This is a beginner friendly pattern and you have to know only the basic stitches in crochet: chain and double crochet

### MATERIALS

#### Yarn & Hook

You can crochet this granny square using any type of yarn and any size crochet hook

This tutorial uses a basic 4 Ply yarn and size 3.5mm crochet hook.

### Notions

Stitch markers, Scissors

### SIZE INFORMATION

#### Sizes

17 cm x 17 cm

### ABBREVIATIONS, GLOSSARY, REFERENCES, TECHNIQUES

This pattern is written and charted using standard US crochet terminology.

CHSp- Chain Space

Rep - Repeat

Sl St - Slip Stitch ●

CH - Chain Stitch ○

DC - Double Crochet ⊥

### METHOD

Make chains 5 and sl st to the first chain like a ring. 3 CH

(Every begging 3 CH count as one double crochet.)

Work into middle fo the ring.

**Row 01-** 2 DC, 2 CH, 3 DC, 2 CH, 3 DC, 2 CH, 3 DC, 2 CH, sl st to the top of the begging CH 2. Turn and sl st the first CHSp



**Work all DC into two chain spaces of the previous row.**

**Row 02-** 3 CH, 2 DC + 2 CH+ 3 DC into same CHSp, 2 CH, (3 DC+ 2 CH+ 3 DC, 2 CH)x3 into next 3 spaces.

Sl st to the top of the begging CH 2. Turn and sl st the first CHSp.



**Row 03-** 3 CH, 2 DC into same CHSp, 2 CH, 3 DC+ 2 CH+3 DC into same CHSp , 2 CH, (3 DC into next CHSp, 2 CH, 3DC+ 2 CH+3 DC into next CHSp, 2 CH)x3 Sl st to the top of the begging CH 2. Turn and sl st the first CHSp.



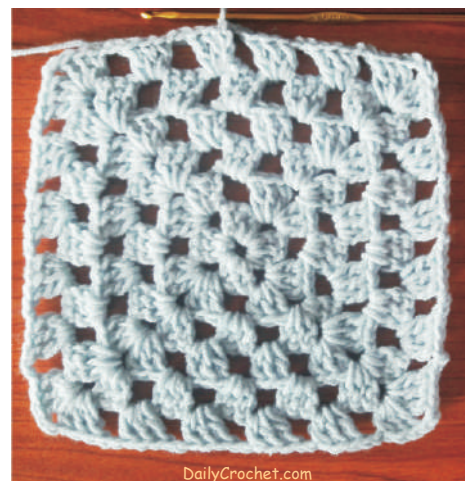
**Row 05-** 3 CH, 2 DC into same CHSp, 2 CH, 3 DC into next CHSp, 2 CH, {3 DC+2 CH+3 DC into next CHSp, 2 CH, (3 DC into next CHSp, 2CH)x3}x3 , 3 DC+2CH+3DC into next CHSp, 2 CH, 3 DC into next CHSp, 2 CH. Sl st to the top of the begging CH 2. Turn and sl st the first CHSp.



**Row 04-** 3 CH, 2 DC into same CHSp, 2 CH, 3 DC+ 2 CH+3 DC into same CHSp , 2 CH, (3 DC into next CHSp, 2 CH, 3 DC into next CHSp, 2 CH, 3 DC+2 CH+3 DC into same CHSp, 2 CH)x3 , 3 DC into next CHSp, 2 CH, Sl st to the top of the begging CH 2. Turn and sl st the first CHSp.

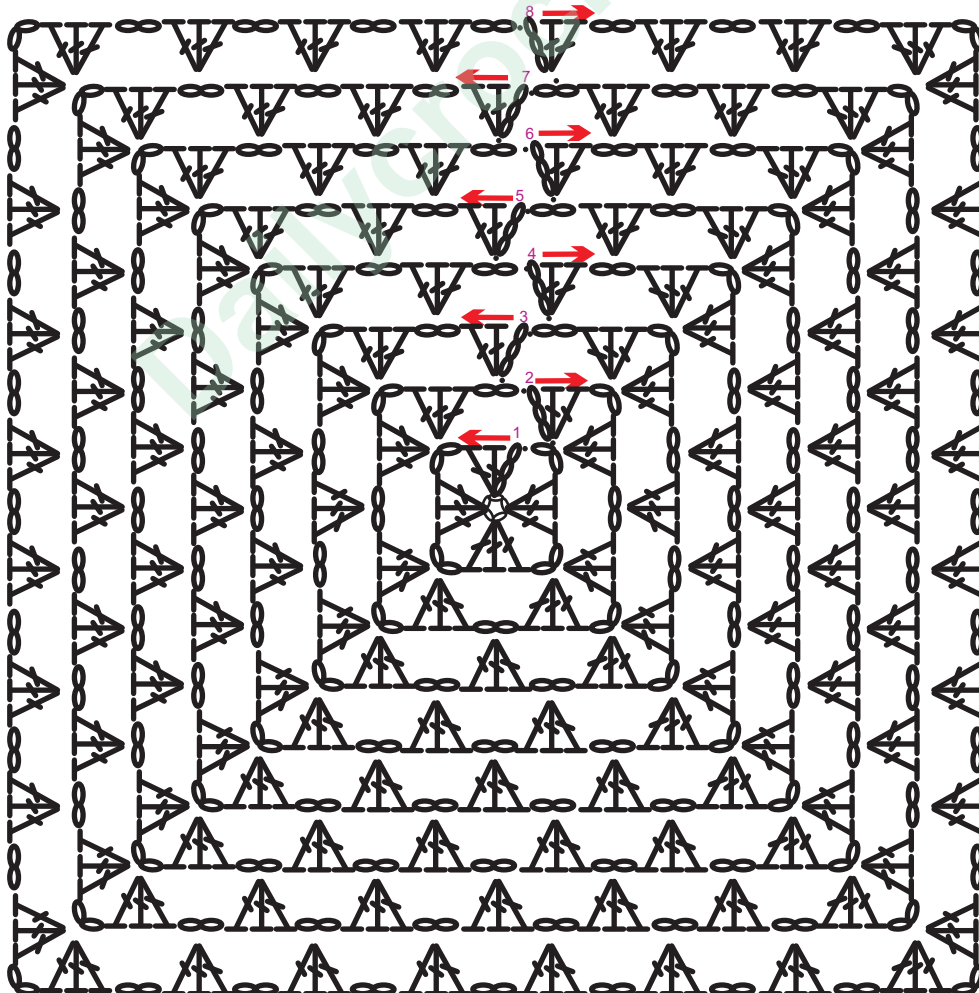
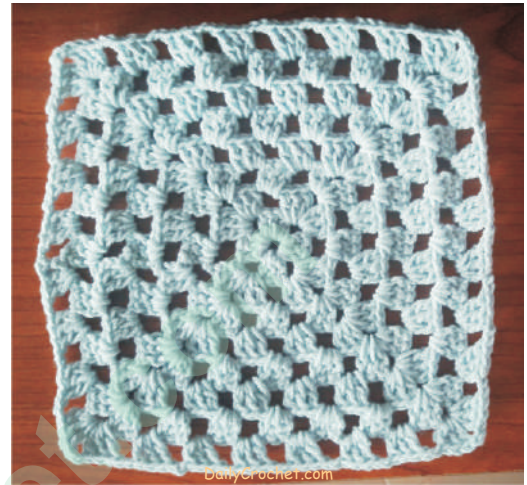


**Row 06-** 3 CH, 2 DC into same CHSp, 2 CH, 3 DC into next CHSp, 2 CH, {3 DC+2 CH+3 DC into next CHSp, 2 CH, (3 DC into next CHSp, 2CH)x4}x3 , 3 DC+2CH+3DC into next CHSp, 2 CH, (3 DC into next CHSp, 2 CH)x2. Sl st to the top of the begging CH 2. Turn and sl st the first CHSp.



**Row 07-** 3 CH, 2 DC into same CHSp, 2 CH, (3 DC into next CHSp, 2 CH)x2, {3 DC+2 CH+3 DC into next CHSp, 2 CH, (3 DC into next CHSp, 2CH)x5}x3 , 3 DC+2CH+3DC into next CHSp, 2 CH, (3 DC into next CHSp, 2 CH)x2. Sl st to the top of the begging CH 2. Turn and sl st the first CHSp.

**Row 08-** 3 CH, 2 DC into same CHSp, 2 CH, (3 DC into next CHSp, 2 CH)x2, {3 DC+2 CH+3 DC into next CHSp, 2 CH, (3 DC into next CHSp, 2CH)x6}x3 , 3 DC+2CH+3DC into next CHSp, 2 CH, (3 DC into next CHSp, 2 CH)x3. Sl st to the top of the begging CH 2. Turn and sl st the first CHSp.



DailyCrochet.com